

Rite of Passage

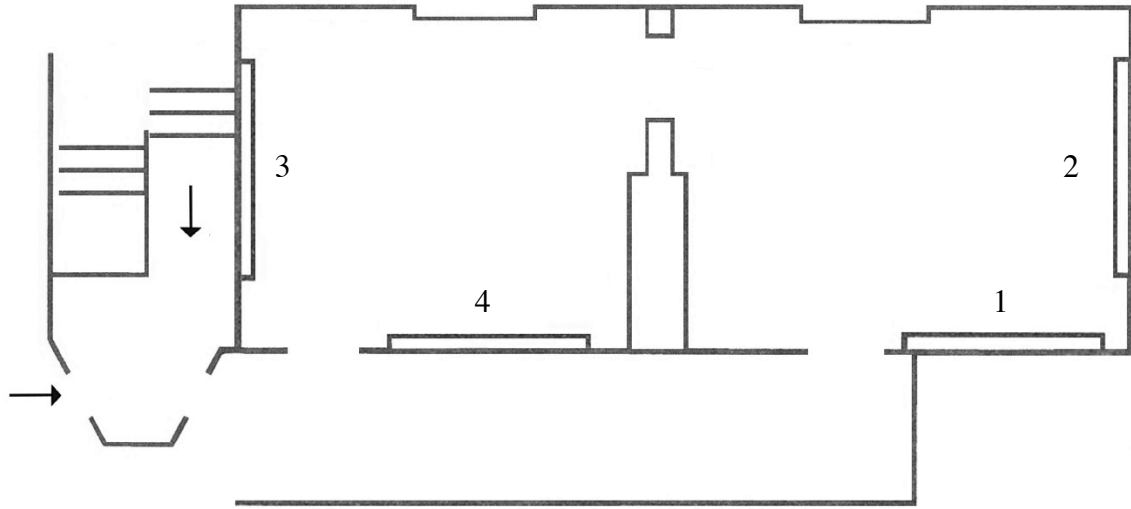
Bethany Garvey-Williams

I have never been comfortable in large groups. However, during lockdown I craved connection. I craved the atmosphere and varied emotions generated in a crowd. That led me to reflect on the reasons why people gather to share mutual experiences, along with the associated practices and symbols, and how such gatherings influence our lives, behaviour and emotional development.

Focusing specifically on three expressions of emotion – sadness, excitement and anger, I chose four types of events - funfairs, music festivals, protests and funerals - that attract large attendance and are familiar to the majority of people. These types of events form the basis of four large-scale paintings. Each composition is built on found imagery as sources for ‘factual’ representations of the event and emotions expressed. I place merged timelines, narratives and imagery into each work without reference to any single specific event. This is done to connect to a wider discourse into society and the place of the individual within it.


Within the paintings are a few of my own images from my personal experiences. Since the lockdown lifted I realised how easy it is to miss out on opportunities and the importance of attending such events for myself. In the funfair painting there is an image based on a spontaneous visit to a funfair in Dublin Swords that a friend and I stumbled across one evening causing us to get swept up by a childlike giddiness as we ran in to go on the rides. Within the music festival painting there is a reference to my attendance at and to the emotions I experienced at a ‘Coronas’ concert.


Floor Plan



- 1. *Funfair*, 200 x 140cm, watercolour on paper**
- 2. *Festival*, 200 x 140cm, watercolour on paper**
- 3. *Protest*, 200 x 140cm, watercolour on paper**
- 4. *Funeral*, 200 x 140cm, watercolour on paper**

POA
Prints available at request.

 bethanygarveywilliams@gmail.com

 +353 83 159 2003

 @bethanygarveywilliams